

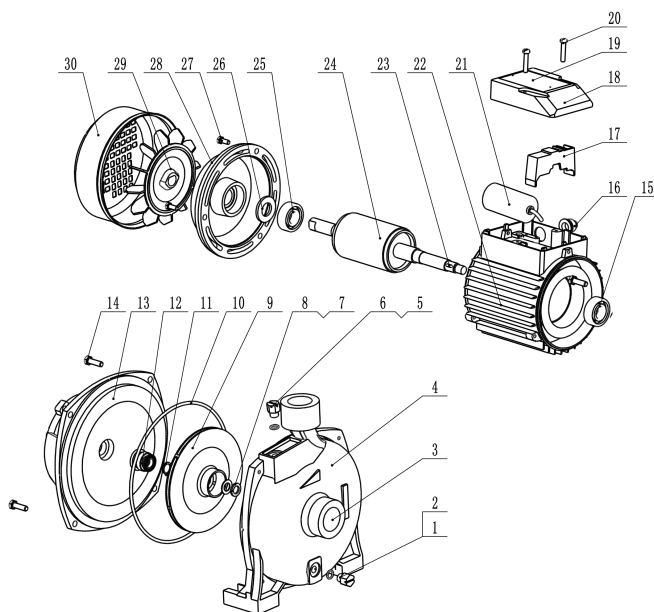
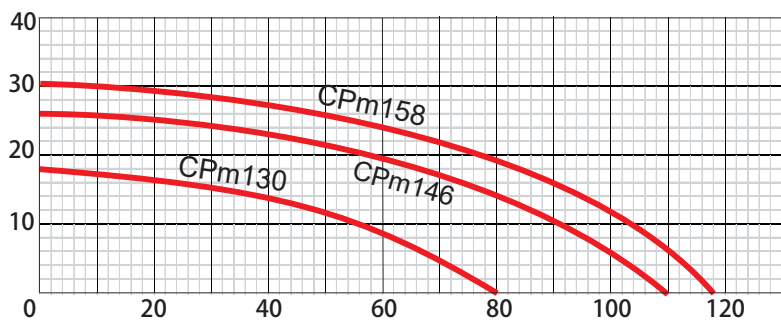
CENTRIFUGAL PUMP

Centrifugal Pumps are suitable for both domestic and industrial applications to convey clean liquids and non-aggressive chemical fluids. These pumps are characterized by low head and high capacity.

50Hz - Technical parameter

| Model | Voltage | Frequency | Power | | Current | H.Max | Q.Max | Size | S.Head | G.W |
|--------|---------|-----------|-------|------|---------|-------|-------|-----------|--------|-----|
| | V | Hz | kW | HP | amp | m | L/min | inch | m | kg |
| CPm130 | 220 | 50 | 0.37 | 0.5 | 2.9 | 18 | 80 | G1" × G1" | 8 | 8.6 |
| CPm146 | 220 | 50 | 0.55 | 0.75 | 3.5 | 26 | 110 | G1" × G1" | 8 | 12 |
| CPm158 | 220 | 50 | 0.75 | 1 | 5.5 | 30 | 118 | G1" × G1" | 8 | 13 |

H(m) PERFORMANCE CHART AT n=2850min⁻¹



EXPLODED VIEW DRAWING - SPARE PARTS

| No. | Description. | No. | Description |
|-----|-------------------|-----|-----------------|
| 1 | Flit plug screw | 15 | Ball bearing |
| 2 | O ring | 16 | Fairlead |
| 3 | Inlet | 17 | Terminal block |
| 4 | Pump body | 18 | Terminal cover |
| 5 | Flit plug screw | 19 | Name plate |
| 6 | O Ring | 20 | Screw |
| 7 | Nut | 21 | Capacitor |
| 8 | Washer | 22 | Motor body |
| 9 | Impeller | 23 | Flat key |
| 10 | O ring | 24 | Motor Rotor |
| 11 | Locicing ring | 25 | Ball bearing |
| 12 | Mechanical seal | 26 | Spring washer |
| 13 | Motor front cover | 27 | Screw |
| 14 | Screw | 28 | Motor end cover |
| | | 29 | Fan |
| | | 30 | Fan cover |

available also in 60Hz