

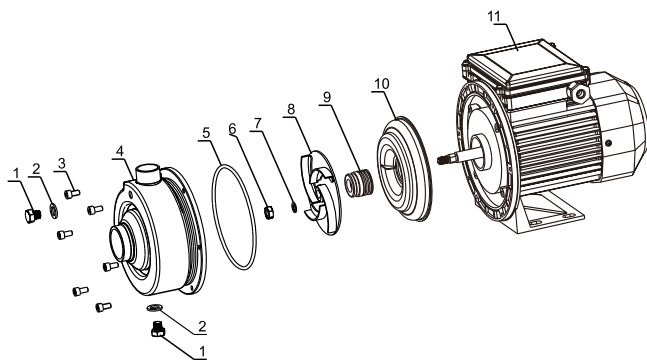
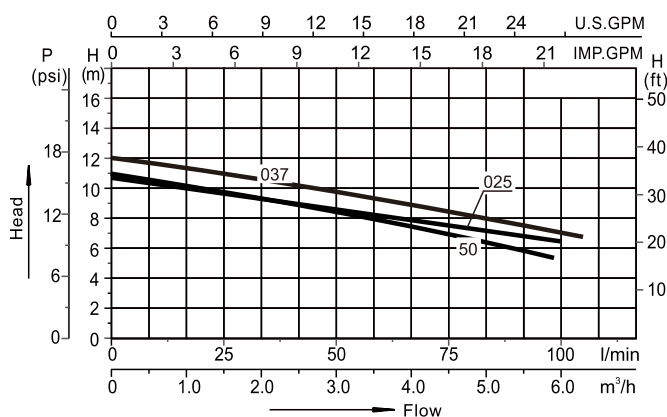
# CENTRIFUGAL PUMP

**Centrifugal Pumps** are suitable for both domestic and industrial applications to convey clean liquids and non-aggressive chemical fluids. These pumps are characterized by low head and high capacity.

## 60Hz - Technical parameter

Model	Voltage	Frequency	Power P2		Current Amp	Rated head m	Rated flow m³/h	DNA	DNM
			kW	HP					
DWK025(T)	220V	60HZ	0.25	0.35	2	9	2.4	G 1 1/4"	G 1"
DWK037(T)	220V	60HZ	0.37	0.50	2	9	3.6	G 1 1/4"	G 1"
DWK50(T)	220V	60HZ	0.37	0.50	2	6.5	4.8	G 1 1/4"	G 1"

PERFORMANCE CHART AT n=3450min<sup>-1</sup>



**EXPLODED VIEW DRAWING - SPARE PARTS**

No.	Description.	No.	Description
1	Plug	7	Spring washer
2	Washer	8	Impeller
3	Inside hexagonal bolt	9	Mechanical seal
4	Pump housing component	10	Pump Cover
5	O-Ring	11	Motor
6	Hexagonal Nut		

available also in 50Hz