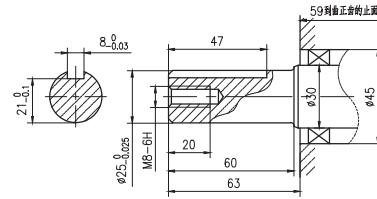
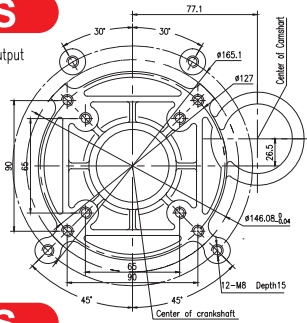


**AIR COOLED DIESEL ENGINE**

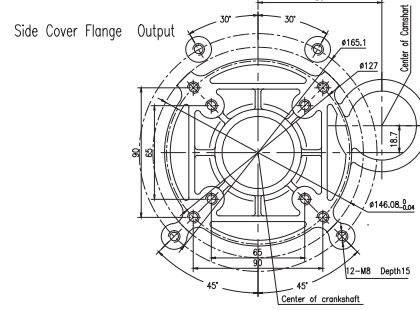
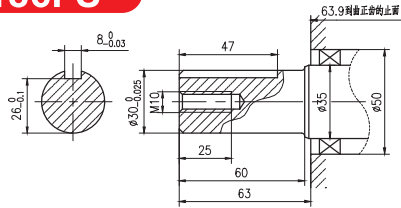


**NK178FS**

Side Cover Flange Output

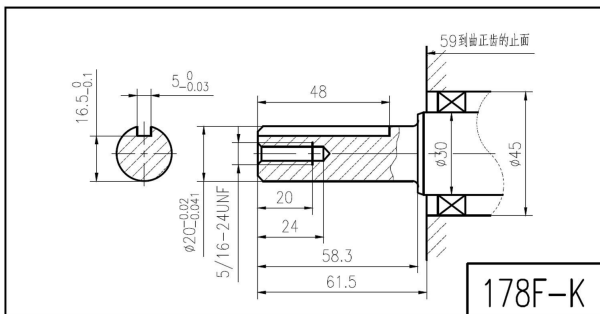
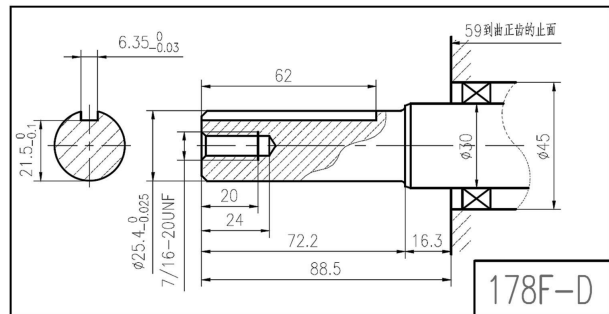
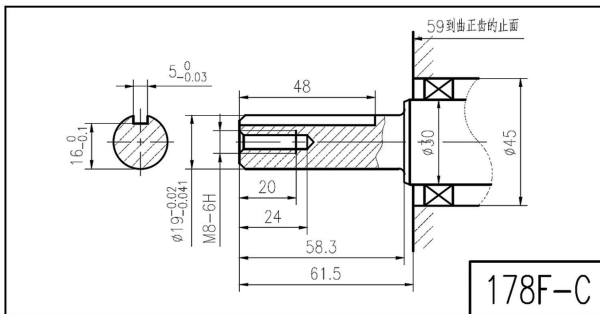
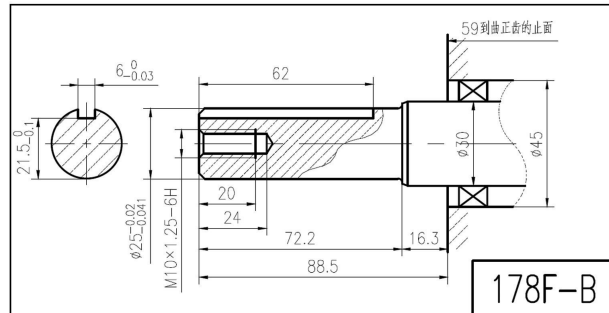
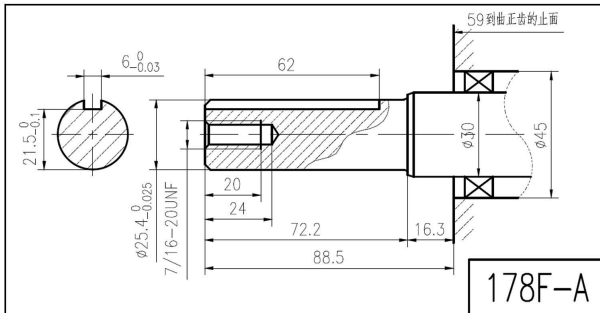
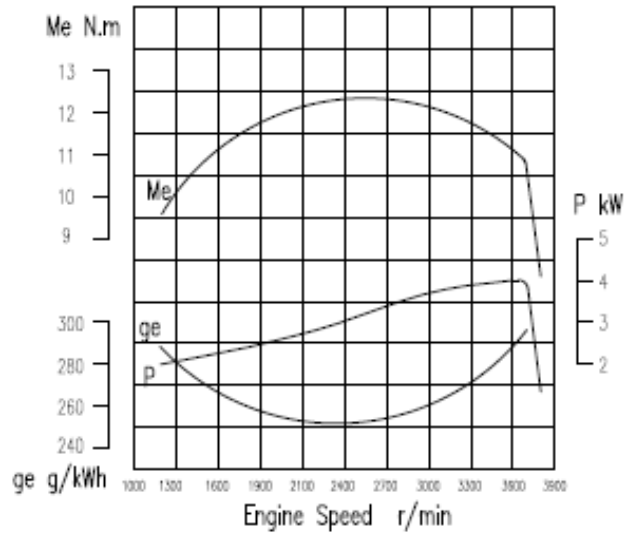


**NK186FS**



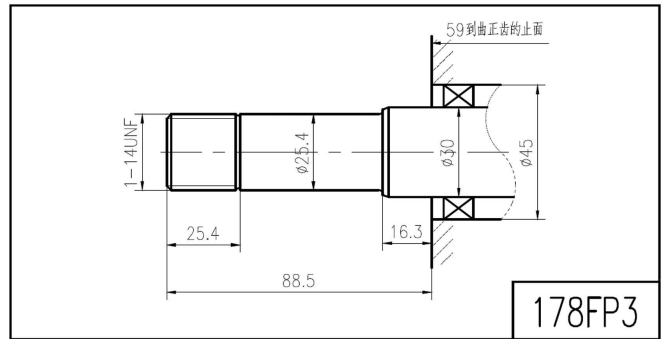
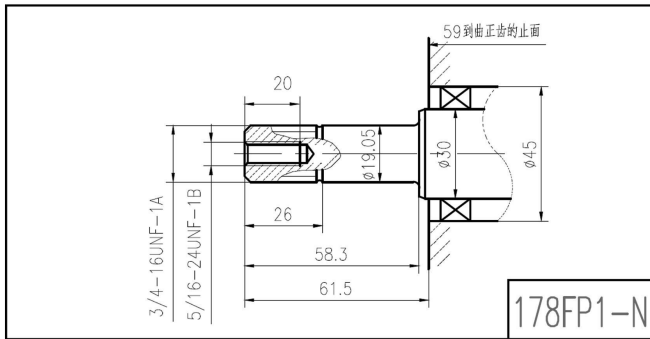
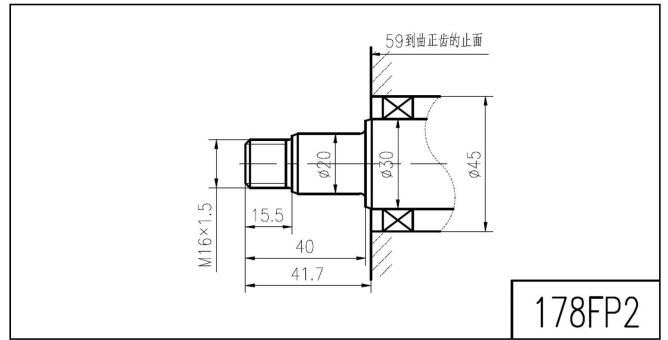
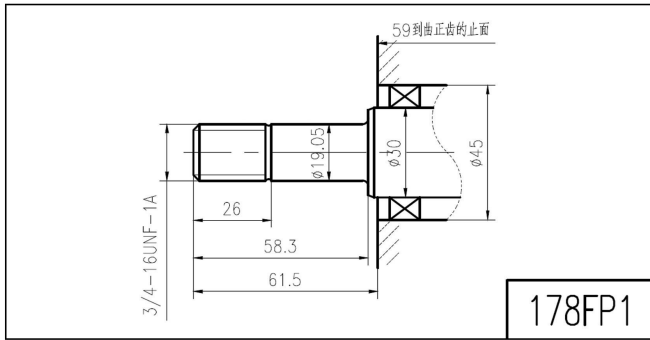
Model		NK178FS	NK186FS
Engine Type		Single-cylinder vertical	4-stroke direct injection
Bore*Stroke	mm	78*62	86*70
Displacement	cc	296	406
Max Rotation Speed	rpm	1800	1800
Max Output Power	HP	7	10
Fuel Tank Capacity	Lt	3.5	5.5
Oil Capacity	ml	1100	1650
Fuel consumption	gr/Kw*h	<280	<270
Starter Model		Recoil or Electric	Recoil or Electric
Compression Ratio		19:1	19:1
Overall Dimension	mm	480x460x520	500x460x555
Weight	Kg	32/34	45/47
20GP/40GP/40HQ Loading	pcs	240/480/600	220/460/529

# 178F Performance Curves

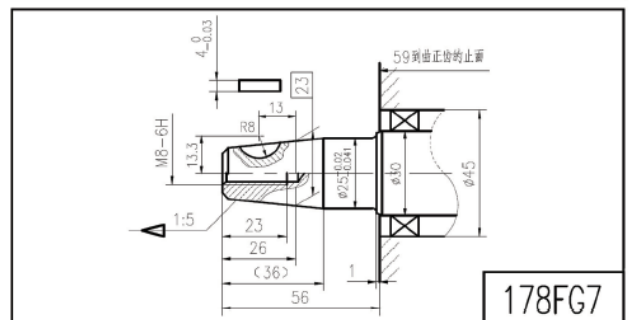
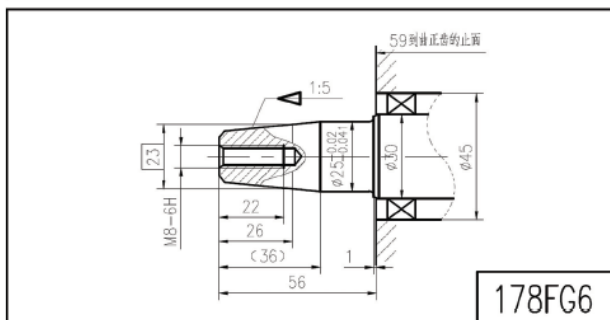
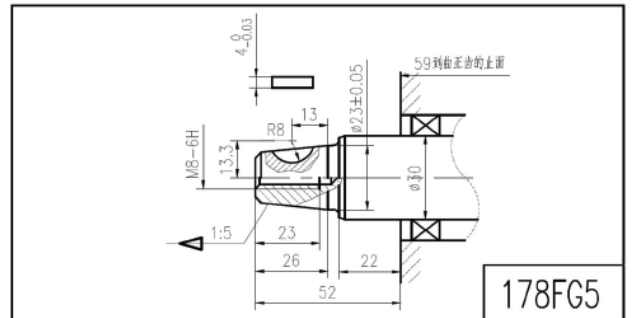
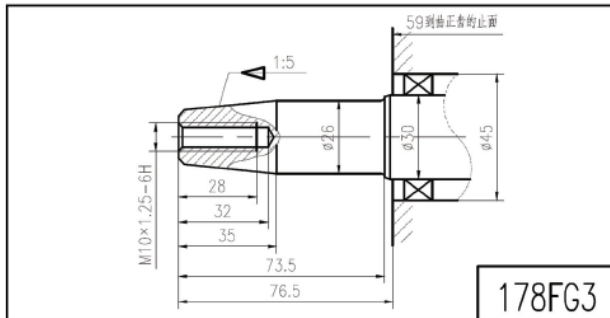
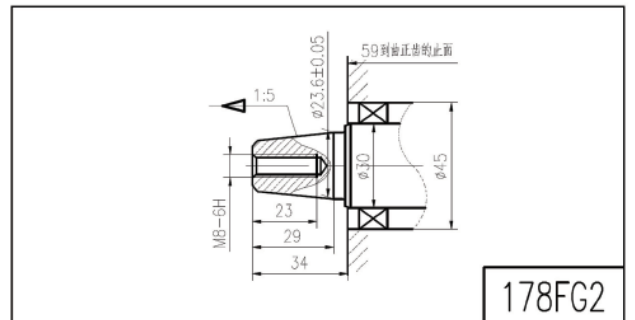
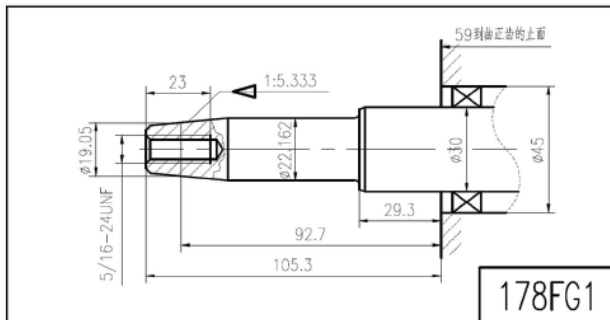


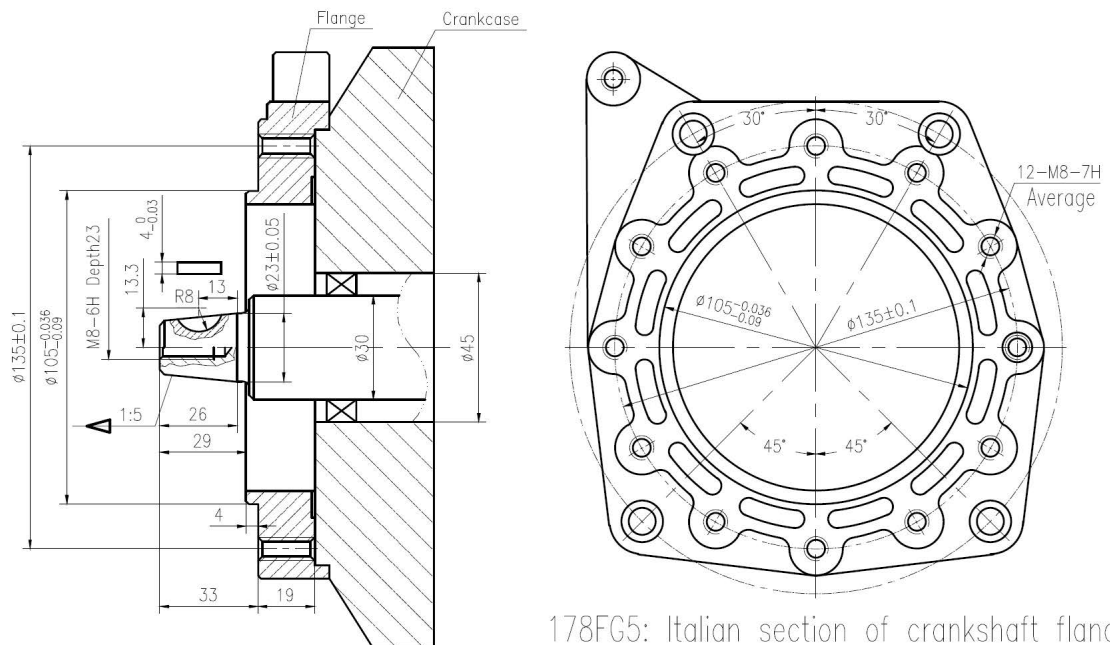
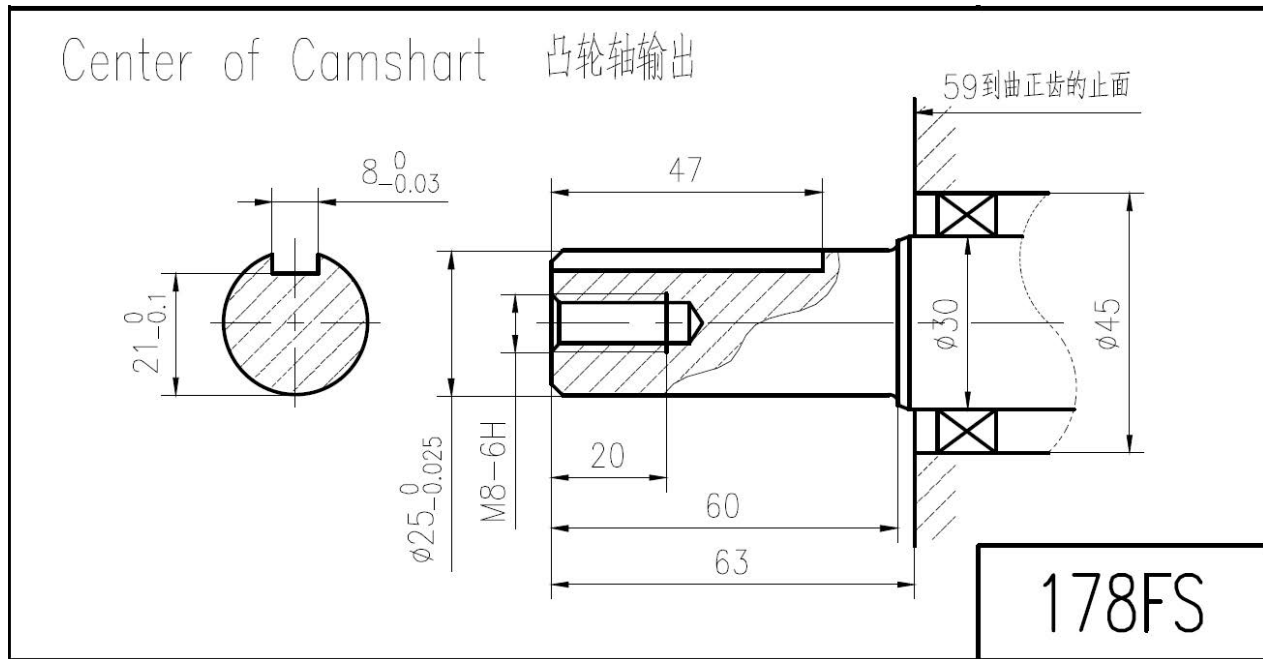
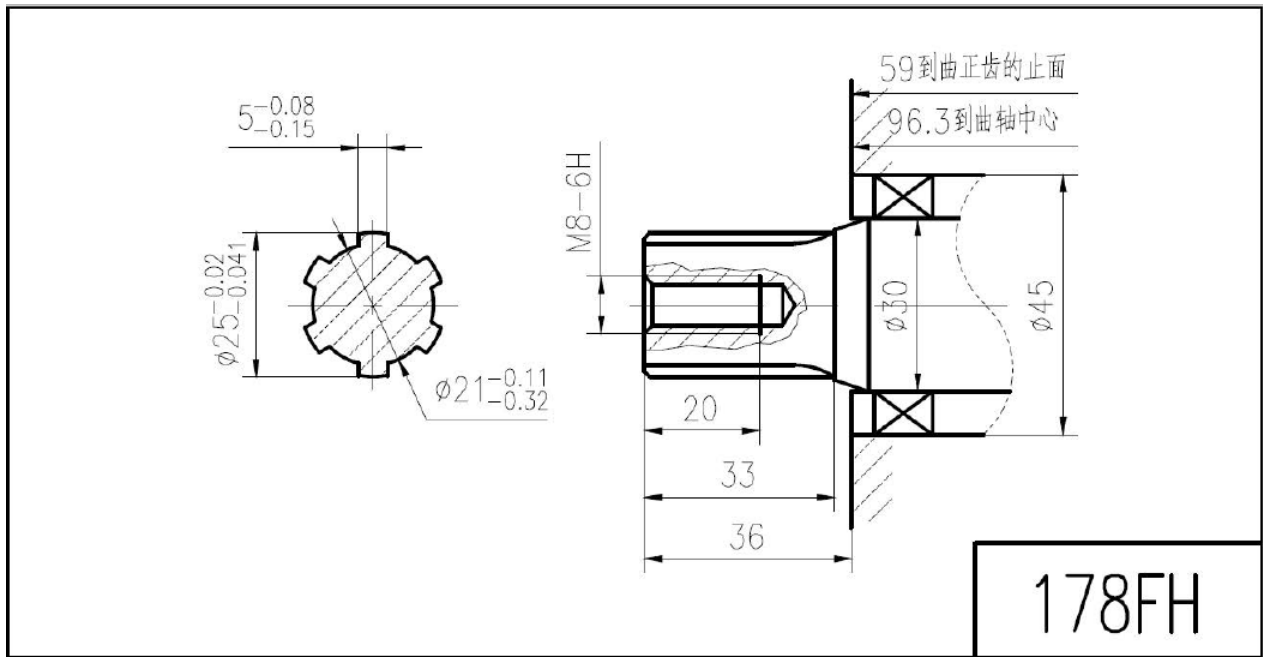
**NK178F  
ALBERI CILINDRICI CON CHIAVETTA**

NK178F  
ALBERI CILINDRICI FILETTATI



NK178F - ALBERI CONICI





178FG5: Italian section of crankshaft flange output

