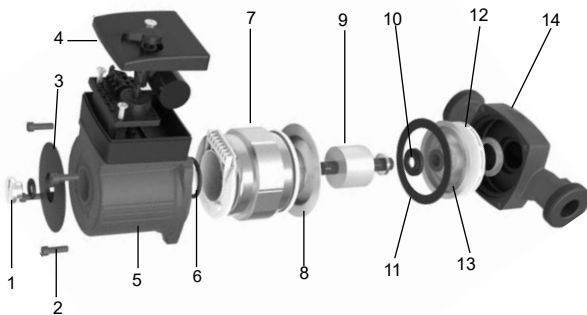
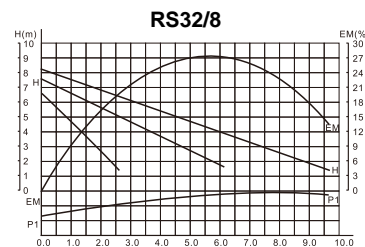
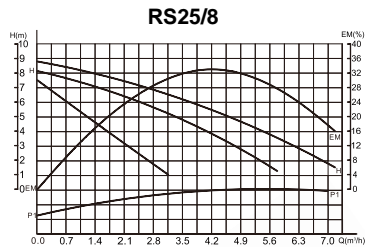
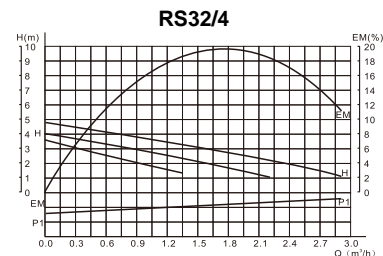
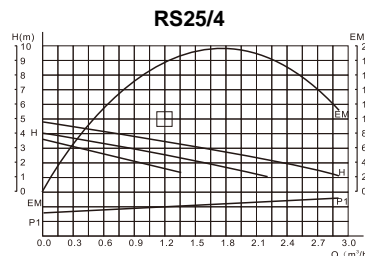
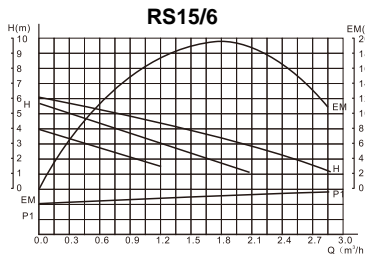
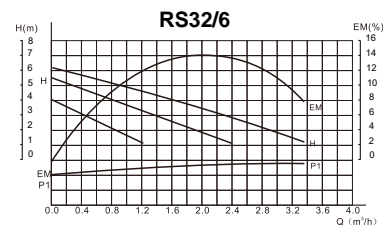
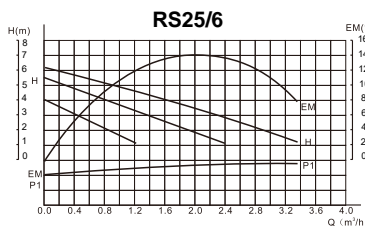
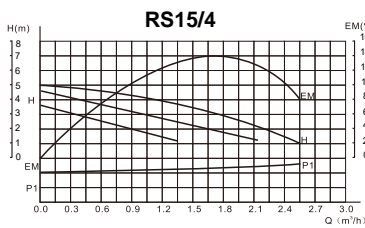


# CIRCULATION PUMP

Circulation Pumps can be used in single pipe or double pipe heating systems, cooling, air-conditioning, boilers and solar systems etc.

## 60Hz - Technical parameter

Model	Voltage	Frequency	Power	Current	Q Max.	H Max.	Size	Pump length
			W	Amp	m³/h	m	inch	mm
RS15/4-130	220V	60HZ	72/53/38	0.33/0.24/0.17	2.3/1.7/0.8	4.5/4/3	G1"	130
RS25/4-130	220V	60HZ	72/53/38	0.33/0.24/0.17	2.9/2.1/1.3	4.5/4/3	G1 1/2"	130
RS25/4-180	220V	60HZ	72/53/38	0.33/0.24/0.17	3.4/2.3/1.3	4.5/4/3	G1 1/2"	180
RS32/4-180	220V	60HZ	72/53/38	0.33/0.24/0.17	3.4/2.3/1.3	4.5/4/3	G2"	180
RS15/6-130	220V	60HZ	93/67/46	0.43/0.30/0.21	2.6/2.0/1.2	6/5/3	G1"	130
RS25/6-130	220V	60HZ	93/67/46	0.43/0.30/0.21	3.3/2.3/1.3	6/5/3	G1 1/2"	130
RS25/6-180	220V	60HZ	93/67/46	0.43/0.30/0.21	3.9/2.9/1.6	6/5/3	G1 1/2"	180
RS32/6-180	220V	60HZ	93/67/46	0.43/0.30/0.21	3.9/2.9/1.6	6/5/3	G2"	180
RS25/8-180	220V	60HZ	182/170/145	0.83/0.77/0.66	6.9/5.7/2.7	8/7.5/6.5	G1 1/2"	180
RS32/8-180	220V	60HZ	270/210/150	1.23/0.95/0.68	9.6/6.2/2.5	8/7.5/6.5	G2"	180



### EXPLODED VIEW DRAWING - SPARE PARTS

No.	Description.	No.	Description.
1	Screw	8	Cover
2	Screw	9	Rotor
3	Nameplate	10	Bearing
4	Terminal box	11	Seal
5	Housing	12	Impeller
6	Seal	13	Cover
7	Stator	14	Pump body

available also in 50Hz